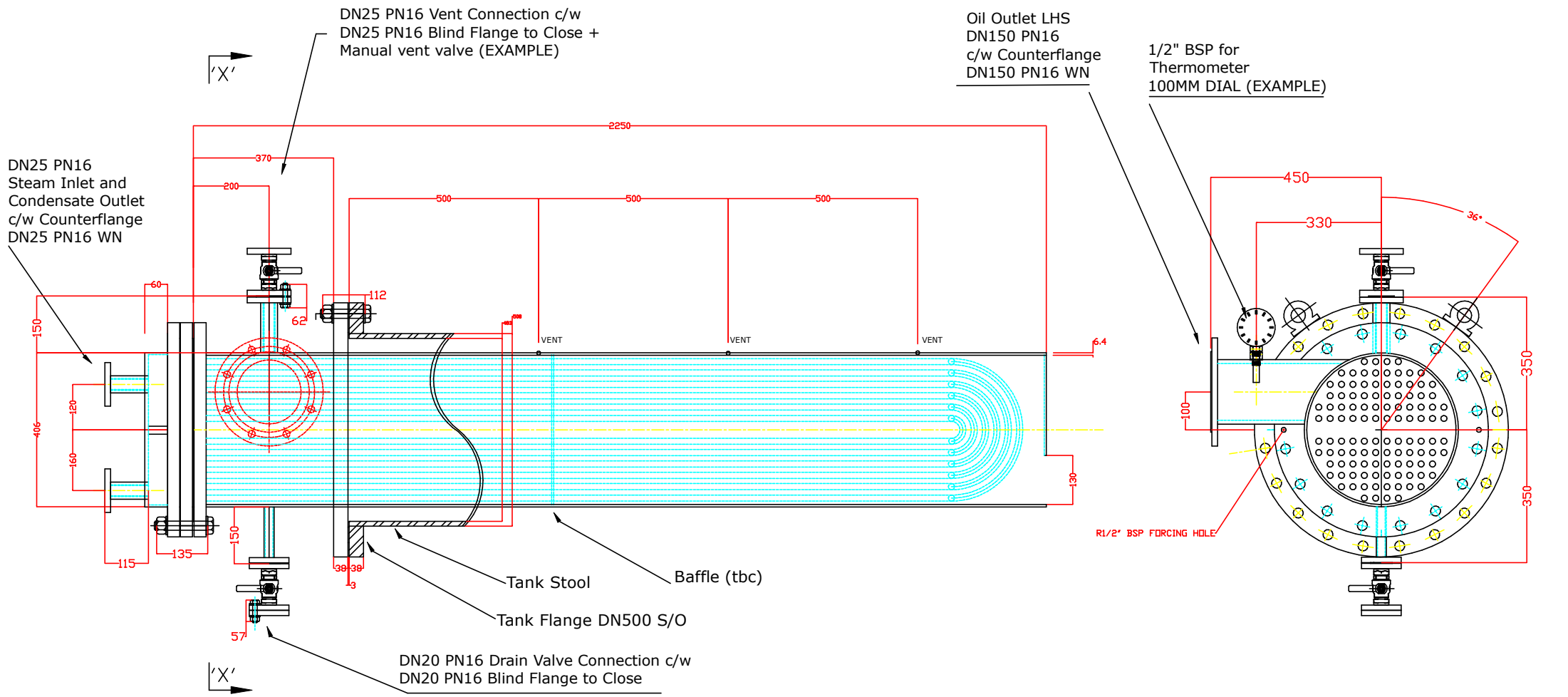


# WORKING DRAFT



**CONNECTIONS**


Tank Flange	: DN500 PN10 SO
Heater to Tank	: DN500 PN10 SO
Heater Shell to Tube Plate	: DN400 PN10 SO
Heater Tube Plate	: DN400 PN10
Heater Steam Hat to TP	: DN400 PN10 SO
Oil Outlet	: DN150 PN16 + DN150 PN16 WN
Air Vent	: DN25 PN16 + DN25 Blind
Drain	: DN20 PN16 + DN20 Blind
Steam Inlet	: DN25 PN16 + DN25 PN16 WN
Steam Condense	: DN25 PN16 + DN25 PN16 WN

Valves shown are examples only

**DESIGN DETAILS**

Materials	: Carbon Steel throughout
Heater Shell	: 2250mm x 406.4mm OD x 6.3mm thick Welded boiler tube
Inlet Cut Out	: 150mm
Steam Heating Surface	: 11.2 m <sup>2</sup> / 120 ft <sup>2</sup>
Steam Tubes	: 56 no. 16mm dia. x 222m total length
Weight (approx.)	: 600kg

LIFTING LUGS (PER PLATE) : ON DN500 - 2 x DP19  
ON DN400 - 1 x DP12

Rev F		Rev D	DRAWING CLIENT APPROVED ADDED LIFTING LUGS	Rev B	WORKING DRAFT	 <b>A K WAUGH</b> <small>Division of Cormac Engineering Ltd.</small>	DRAWN	A WAUGH
Rev E		Rev C	UPDATED SHELL TO 400 NB	Rev A	ADDED DETAIL		DATE	27.07.21
<b>CCO200 - Steam Only Outflow Heater General Arrangement</b>							SCALE	1:1
							DRAWING NO.	CCO200-EN-400
							REVISION	0   A   B   C   D